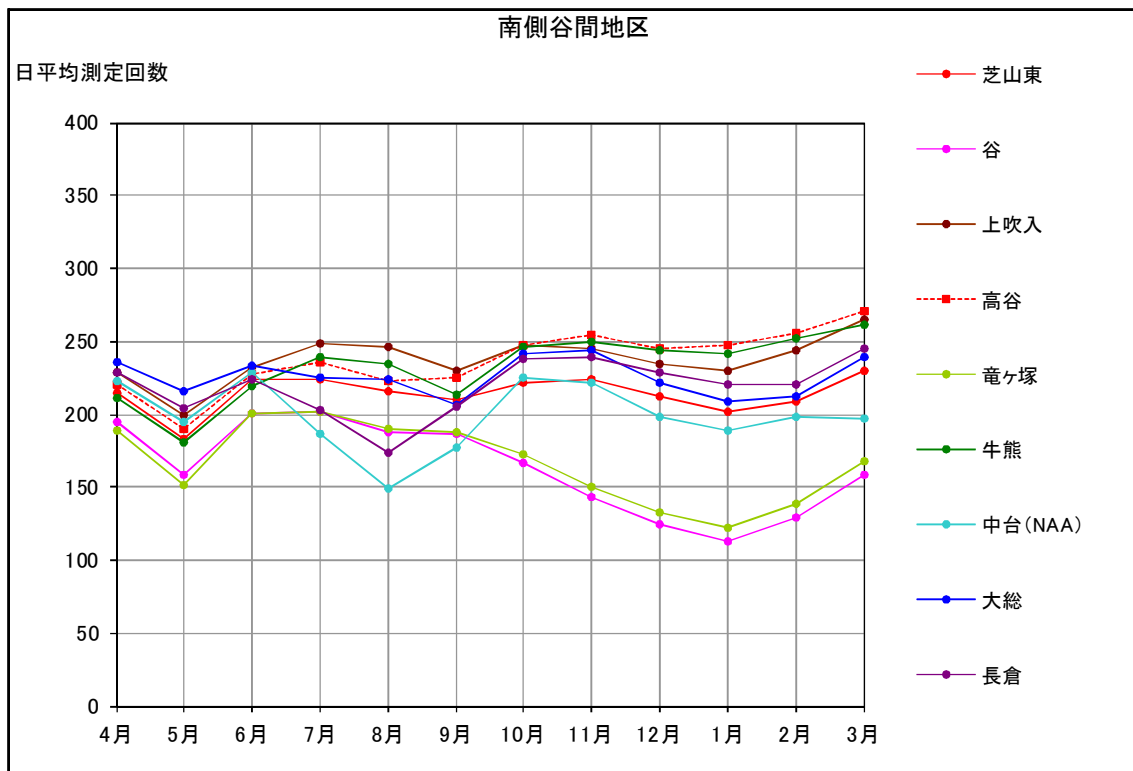
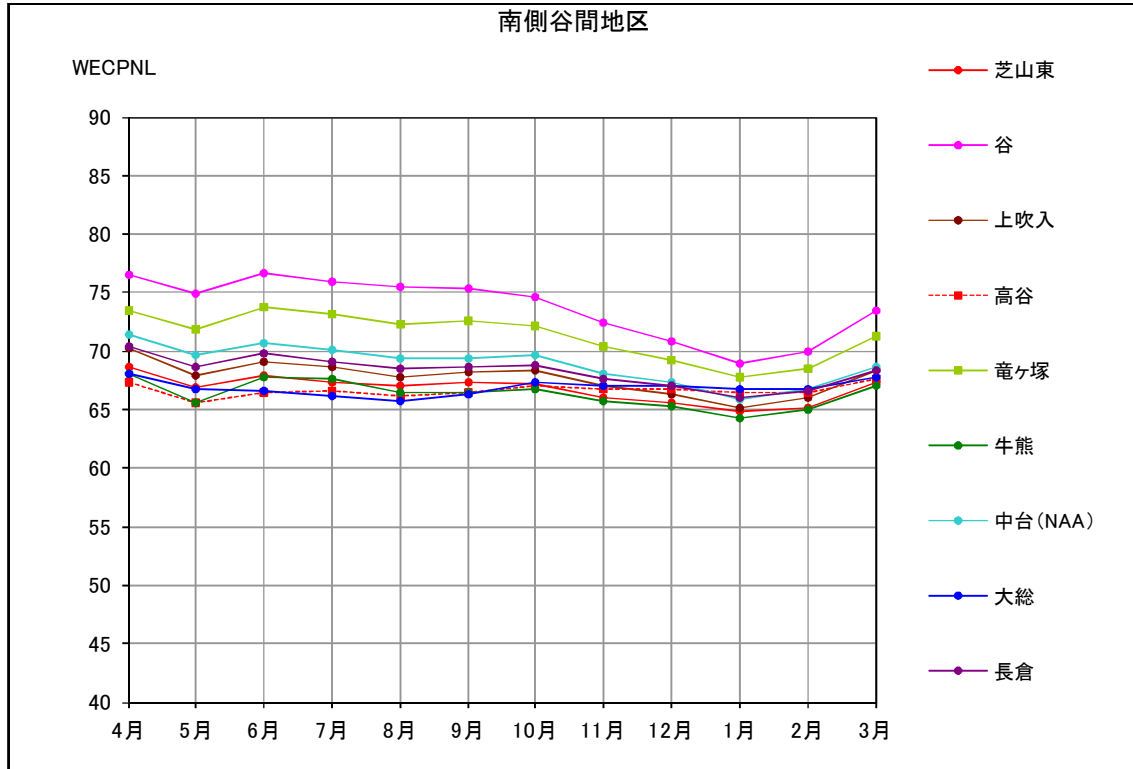
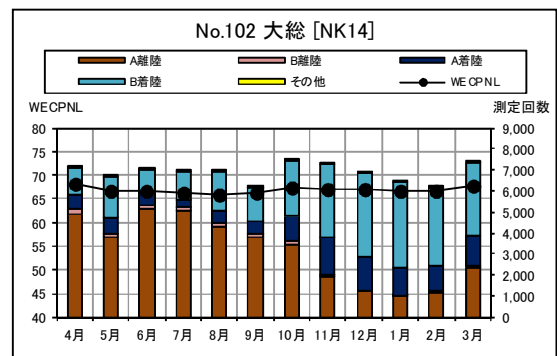
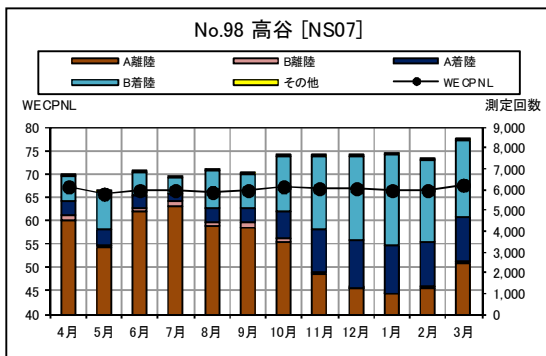
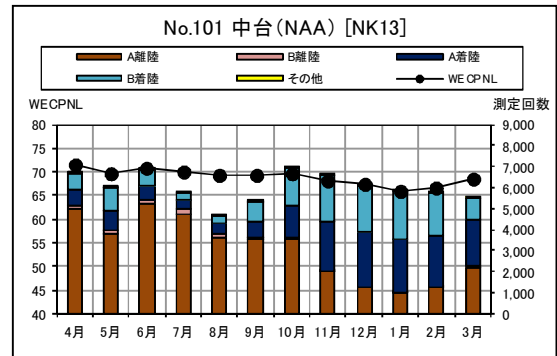
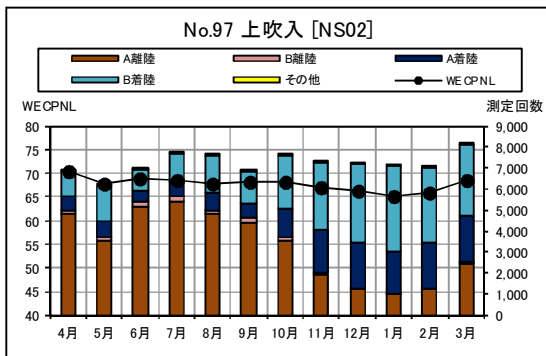
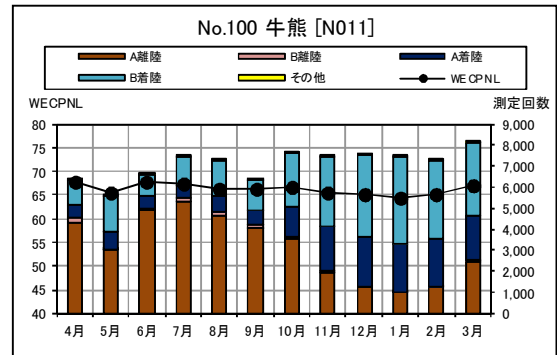
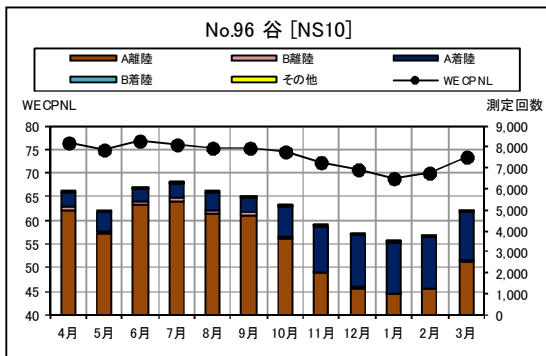
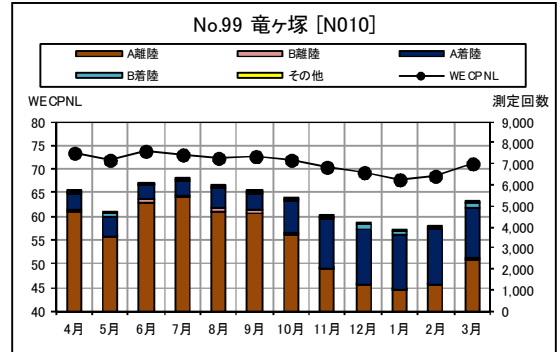
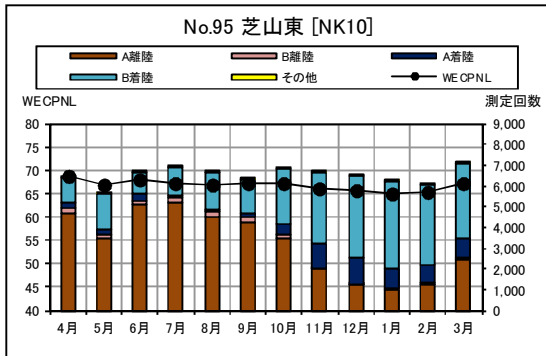


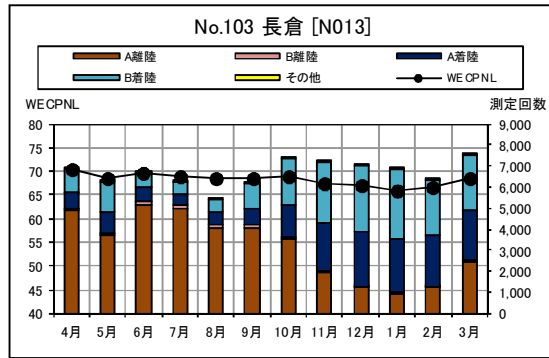
南側谷間地区 月別W値及び日平均測定回数



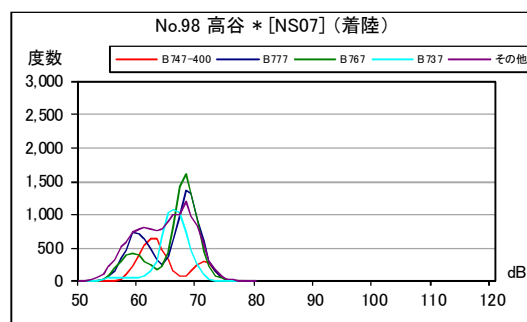
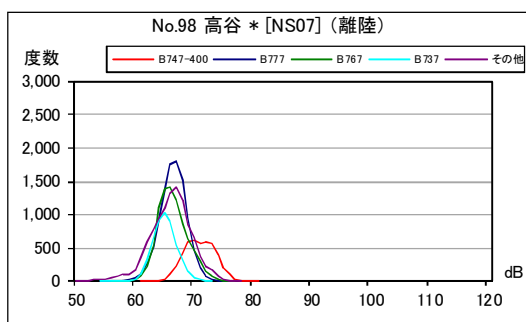
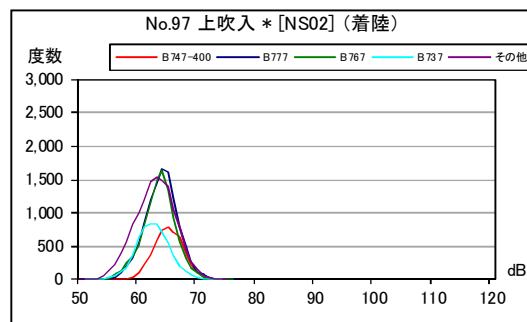
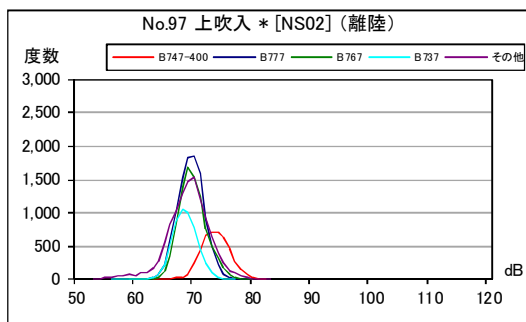
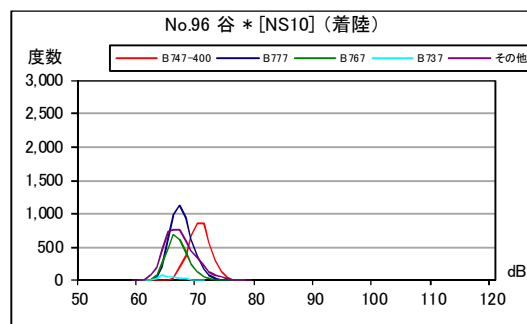
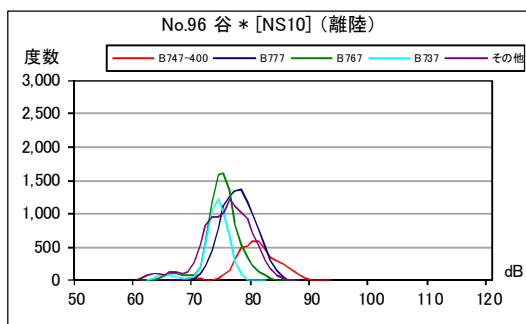
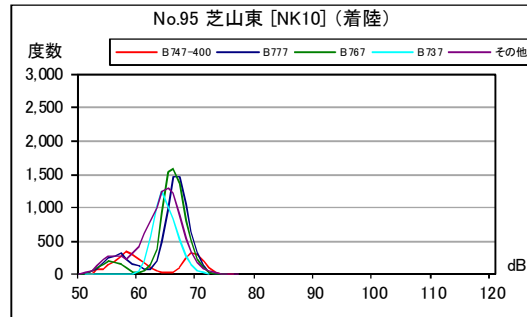
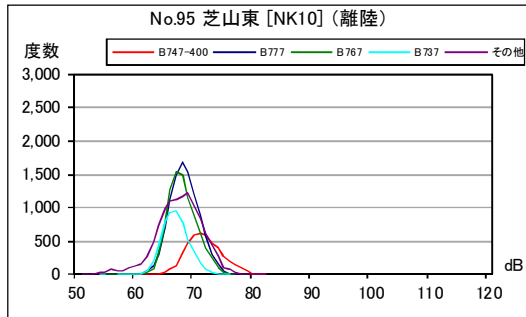
南側谷間地区 月別測定回数及び WECPNL



南側谷間地区 月別測定回数及び WECPNL

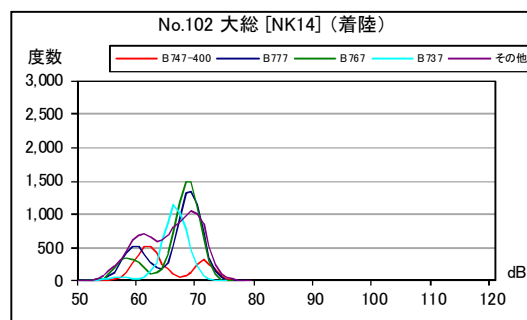
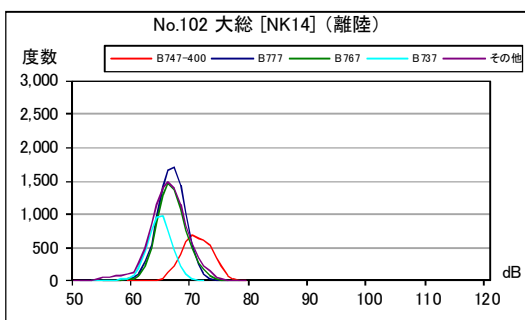
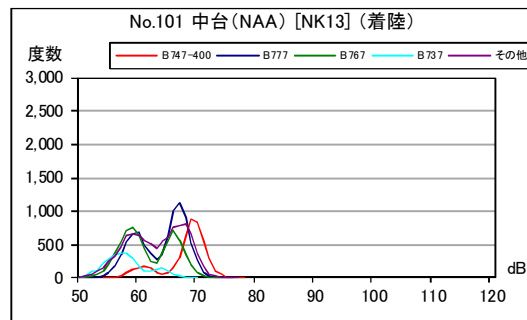
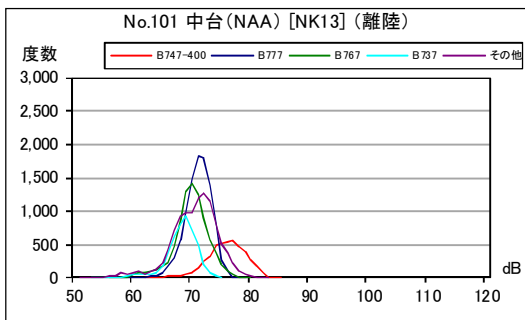
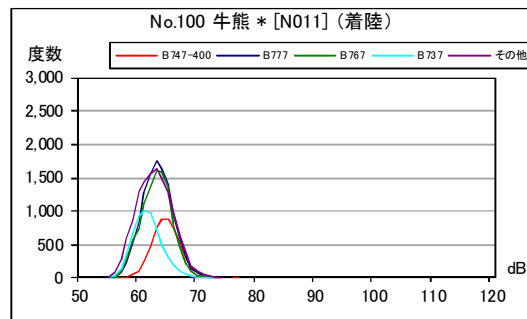
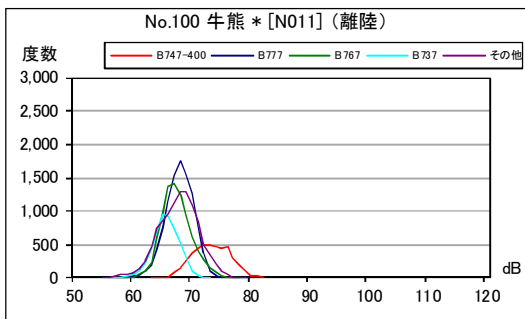
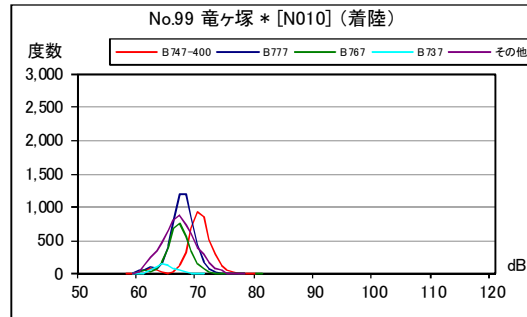
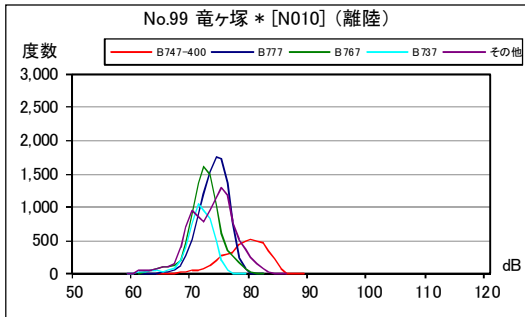


南側谷間地区 最大騒音レベルの度数分布図



資料 40

南側谷間地区 最大騒音レベルの度数分布図



南側谷間地区 最大騒音レベルの度数分布図

